

TECHNICAL SPECIFICATIONS - SOUNDS & LIGHTS

Security, structure and cabling specifications will be sent after site reconnaissance

CIRCO
Da
MADRUGADA
(BRASIL)

Un spectacle de
PIERROT BIDON
et des Studios de cirque de Marseille



ORGANISER'S RESPONSIBILITIES

Requirements for installation of CIRCO DA MADRUGADA

- ✂✂ Enough room for the manoeuvring of articulated trucks, crane, charges telescopic lift,
- ✂✂ The area needed for structure assembly is 35x35 mini or best 50 m x 50 m,
- ✂✂ On hard and flat ground, cleared of all obstacles, permitting the fixing of 80 cm spikes.(in case no spikes possible, we need 8 ballasts 500kg)
- ✂✂ The structure laid out before assembly has a diameter of 44 m,
- ✂✂ The assembled structure has a ground diameter of 30 m,
- ✂✂ The area must allow, either using the existing environment or a crane, fixing points for Tyrolean traverses at a linear distance of 100 to 300 m and a hanging height of 30 to 60 m.(on floor we need natural points or ballast 1T)

Requirements (responsibility of the organiser)

- ✂✂ accommodation and catering for 30 people from arrival date to departure date,
- ✂✂ structure and artistic transport (truck and bus or boat and plane),
- ✂✂ on-site personnel and equipment insurance, (we have minimum coverage)

Availability of :

- ✂✂ site security 24h/24h,
- ✂✂ an arrival and organisation coordinator,
- ✂✂ 8 personnel during assembly and break down days,
- ✂✂ 4 personnel on show days (volunteers)
- ✂✂ telescopic lift 12m for assembly and break down,
- ✂✂ 50 T crane 40 m minimum,
- ✂✂ 6 walkie-talkies (500 meter range),
- ✂✂ dressing rooms for 30 people (mirrors, showers, toilets),
- ✂✂ * 10 x 5 m stage, hight : 1.5 m,
- ✂✂ * 2 towers 2 x 2 m, hight : 4 m for 2 follow spots,
- ✂✂ * 2 sound towers 2 x 2 m, height : 2,50 m,
- ✂✂ * covered sound and light station, opposite stage 3 x 2 m, hight : 0.40 m,
- ✂✂ 2 power supplies 160 A and 32 A,
- ✂✂ (and local electrician or group-man in case of a generator),
- ✂✂ sufficient barriers for spectator security,
- ✂✂ overhead cabling to ensure unhindered movement for the public
- ✂✂ dist of duty doctors, osteopaths,...

* this material could be made available via leasing / rental from our suppliers, transport will also be charged.

TECHNICAL AND ARTISTIC TRANSPORT

"CIRCO DA MADRUGADA 2008"

Techniques and assembly

A – The client shall supply all facilities necessary for the show. As the employer, he shall ensure the remuneration and fiscal/social charges of his personnel and shall also ensure general site services : Arrival, security and technical personnel (logistics, equipment including sound and light if (B), if not supplied by the company (C)).

B – Where equipment is supplied by the client, it must conform to the technical specification sheet attached to this contract.

C – Where the material is supplied by the company.

The company undertakes to supply technical details concerning its equipment as well as details on logistics and personnel in order not to infringe existing legislation and regulations concerning the installation of the show by the client. As employer, the company shall ensure the remuneration and social/fiscal charges of its personnel.

D – self-supporting spider dome structure of 30 m diameter, 16 m high, assembly carried out on flat ground with no obstacles. Area 50 x 50 m. The dome is erected by a 40 m crane with a minimum load of 10 tons (see enclosed diagram). 50 ton crane supplied by the buyer.

E – Elevated material (trapeze, high-wire,...) installed by competent company artists / technicians. Elevated cable and tyrolian traverses installed by qualified company personnel (documentation – conformity certificates of material used)

F – Cable attachment using surrounding environment. Authorisation must be obtained in order that installation proceeds smoothly (documentation – conformity certificates of material used).

G – Crane for long tyrolian traverses. If the surrounding environment does not allow for their attachment, the client shall find a solution designed to ensure the visual aspect of the show such as it was intended. Minimum heights are 30 m at a distance of 100 m (the idea being to keep the crane on site after spider dome assembly).

H – Transport (Billed to the client by kilometer) :

- ~~1~~ 1 truck or 2 containers of 80 m3 according to destination,
- ~~1~~ 1 truck if not in case of stage or towers or 1 container 80m3)
- ~~1~~ 1 BUS / COACH (plane according to destination)
- ~~1~~ 1 MINIBUS 9 PAX (available on arrival according to destination)
- ~~30~~ 30 PERSONNEL (26 personnel in case of no road transport)

TECHNICAL DETAILS SOUND & LIGHTS **(B or C according to organiser's choice)**

LIGHT

- 8 mac 2000
- 8 mac 600 nt
- 1 console scan commander
- 1 cablage 10/16A and dmx
- 1 electrical station of 160A
- 1 secondary distribution box 63A x 2x32A
- 2 follow spots 2.5kw Hmi
- 48 by 64 (24 cp61 et 24 cp62)
- 1 graduator rack light 24x3 KW dmx
- cabling
- 1 console dmx 24 circuits, 2 memory systems
- 2 smoke machines ZR33 + fans
- 2 technicians

SOUND

- 1 main P.A. of 16 kW minimum with sub bass (Meyer, C.Heil,D&B, Electro Voice...)
- 2 sound towers wings or clusters, adapted to system
- 6 MTD 115 (multi diff et fold back), aero clips and attachments for 6 MTD
- 2 stereo delay lines
- 1 16 tracks desk minimum 4 / 4 / 2 (01V Yamaha)
- 1 rack. compressors, effects, 4 stereos equalizers 2x31 Bands (if analog desk)
- 2 cd players
- 2 Sm58
- 2 HF head mics 800 Mhz with deported receptor
- 5 intercoms posts + station
- cabling
- 2 technicians

Production Director :

Philippe Da Silva:

Gsm:0033 (0)6.07.31.57.64

Tel: 0033 (0)4.78.29.30.57

Fax: 0033 (0)4.78.39.94.92

Mail: musicprodart@aol.com



11 rue du Bon Pasteur 69001 Lyon – FRANCE
N°SIRET 484 904 354 00020 - APE 923A – Licence Entrepreneur Spectacle N° 69/1293 et 69/1294

Tel: 00 33 (0)4 78 29 30 57 Fax: 00 33 (0)4 78 39 94 92 Email: musicprodart@aol.com Site: www.musicprodart.com

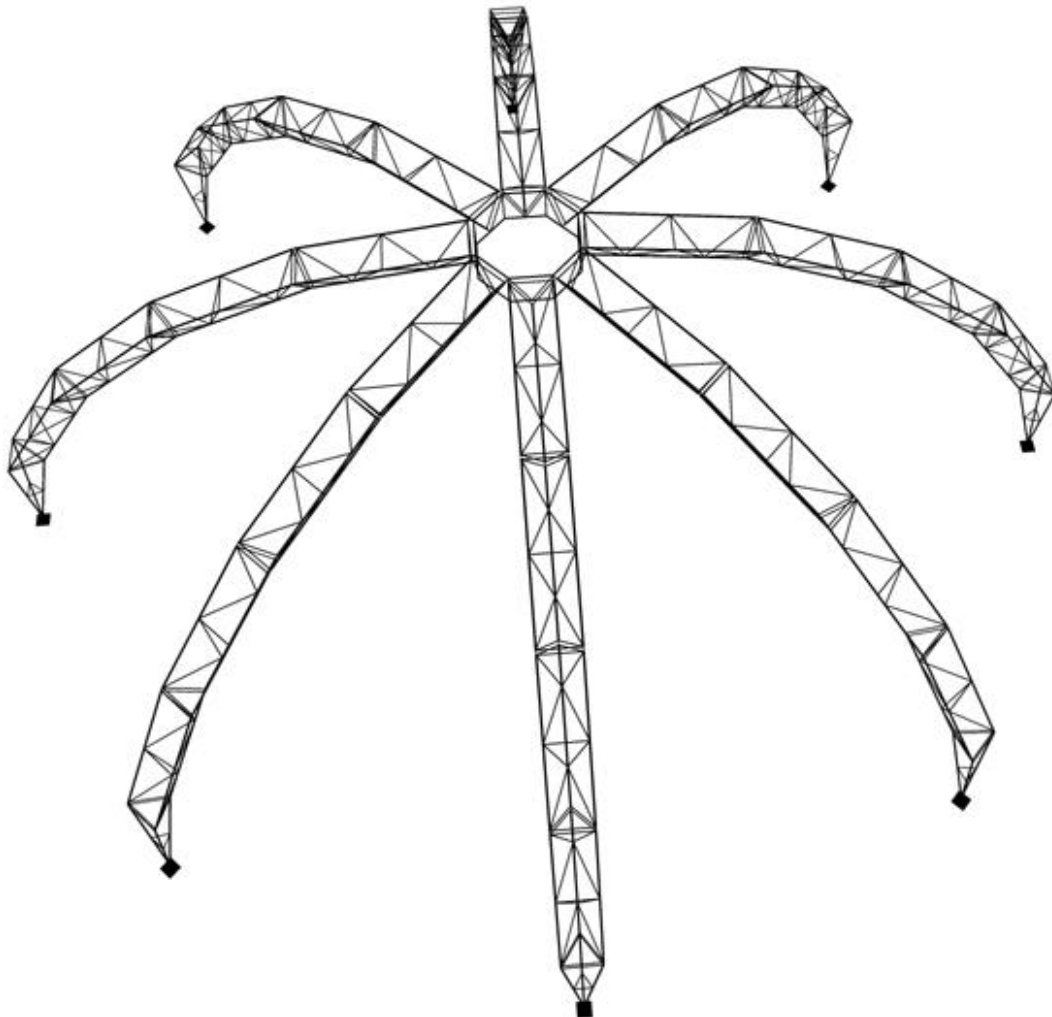
SPIDER DOME 3 D

Ground assembly area : 35x35 or best 50 x 50 meters

Ground diameter assembled structure : 30 meters

Ceiling height for indoor assembly : 22 meters

Height of assembled structure : 16 meters

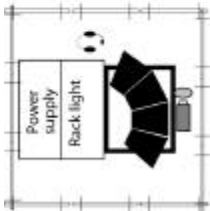


M.P.A. 11 rue du Bon Pasteur 69001 Lyon – FRANCE

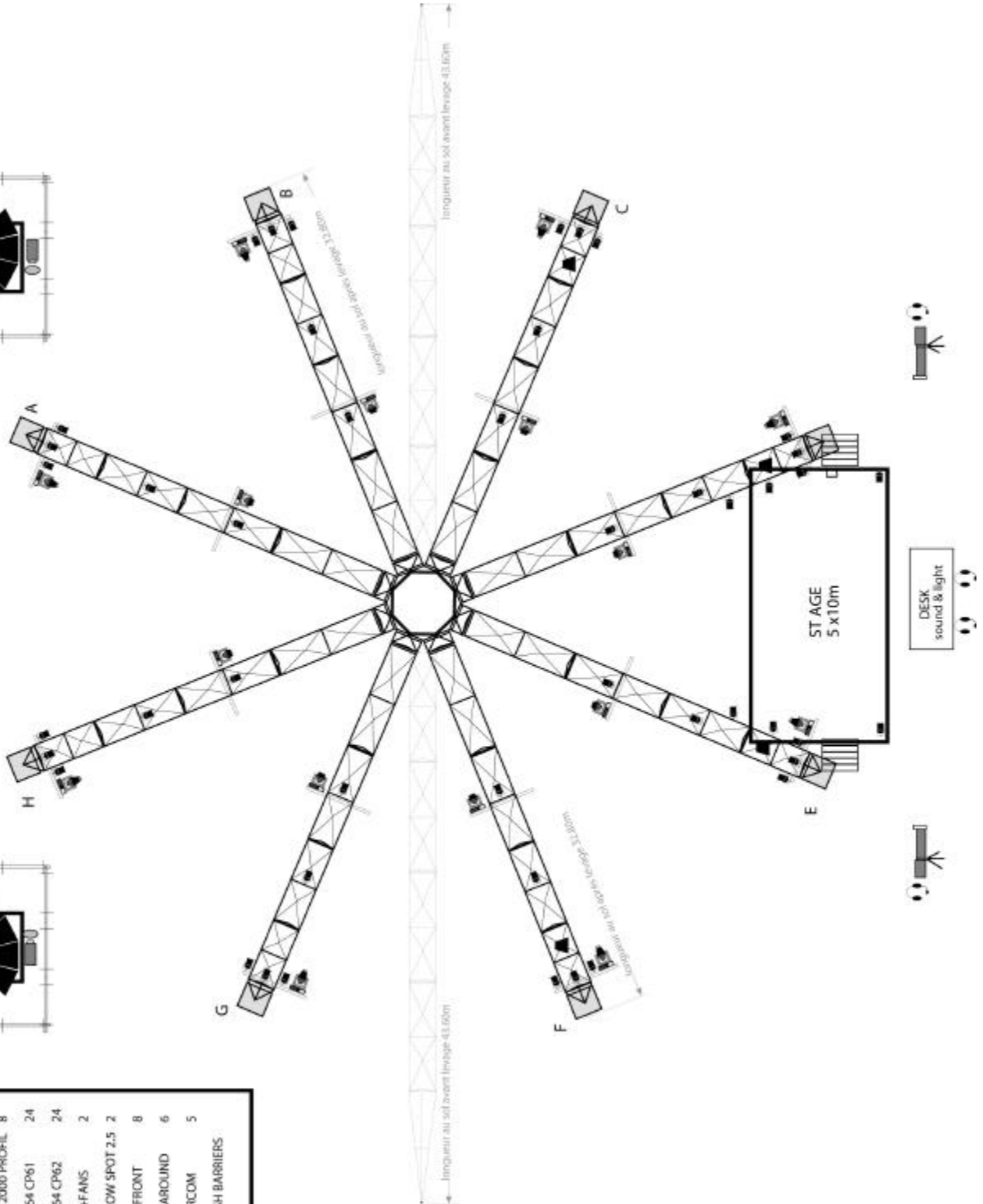
N°SIRET 484 904 354 00020 - APE 923A – Licence Entrepreneur Spectacle N° 69/1293 et 69/1294

Tel: 00 33 (0)4 78 29 30 57 Fax: 00 33 (0)4 78 39 94 92 Email: musicprodart@aol.com Site: www.musicprodart.com

CIRCO DA MADRUGADA TOUR 2008



LEGENDE 1/200	
	MAC 600 NT 8
	MAC 2000 PROFIL 8
	PAR 64 CP61 24
	PAR 64 CP62 24
	FOG-FANS 2
	FOLLOW SPOT 2,5 2
	DIFF FRONT 8
	DIFF AROUND 6
	INTERCOM 5
	CRASH BARRIERS



M.P.A. 11 rue du Bon Pasteur 69001 Lyon – FRANCE

N°SIRET 484 904 354 00020 - APE 923A – Licence Entrepreneur Spectacle N° 69/1293 et 69/1294

Tel: 00 33 (0)4 78 29 30 57 Fax: 00 33 (0)4 78 39 94 92 Email: musicprodart@aol.com Site: www.musicprodart.com

TECHNICAL DETAILS FOR CRANE ERECTION

Schema and diagram for the type of crane needed by the company for structure assembly.

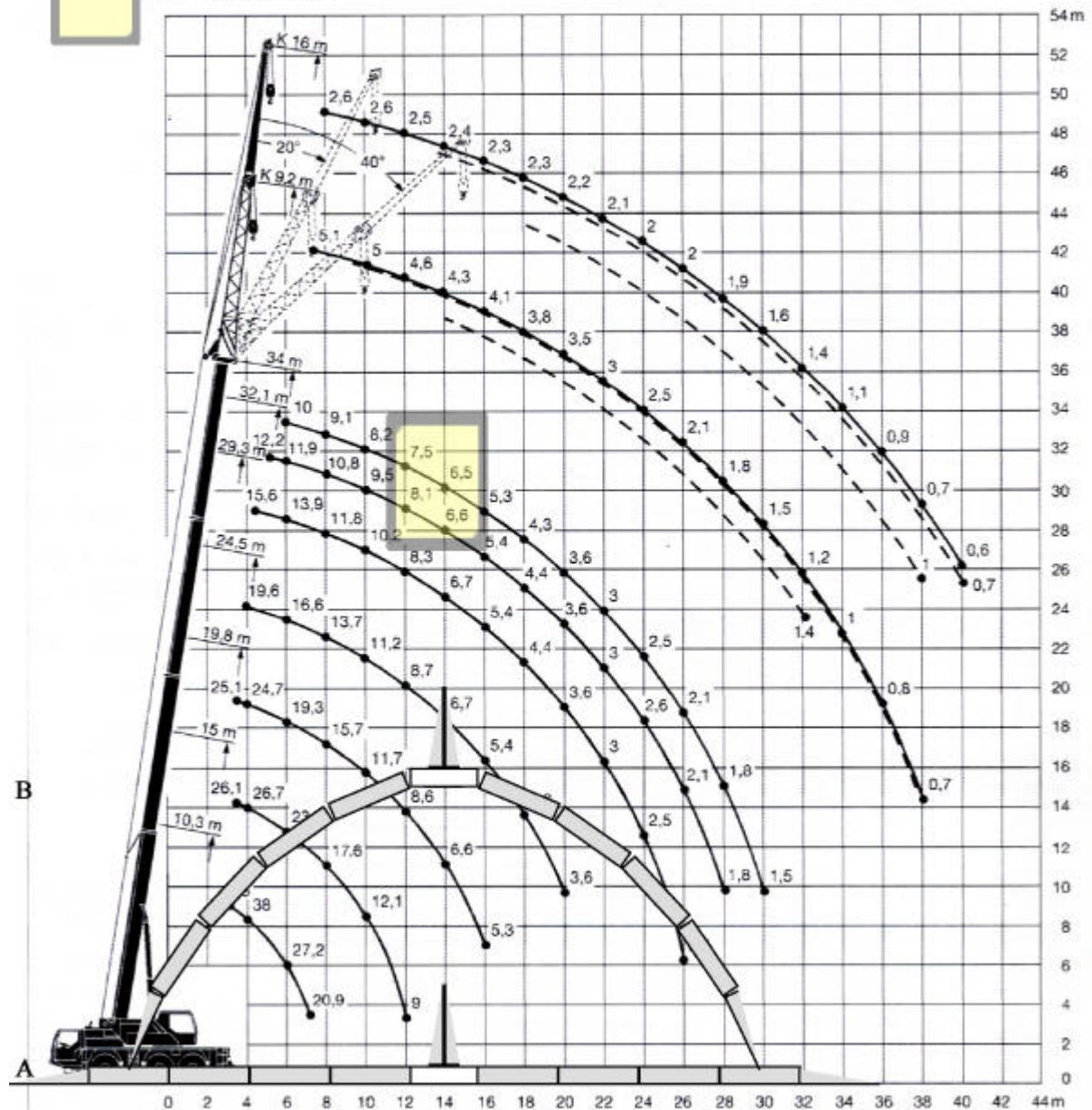
Installation companies must use a "spider" stabilisation system" of 4 cables, of 4 meters minimum free run each. If the crane is also used for attaching tyrolian traverses, installation companies must supply a personal lift nacelle for 4 people minimum.

The attachment system for tyrolian traverses is supplied by the Circo Da Madrugada. The organiser shall provide a 16 A power supply at the crane for use by the Circus.

Work zone



ZONE DE TRAVAIL



Simulation of erection technique : **A** : grounded structure, **B** : elevated structure, time needed 4 hours.

M.P.A. 11 rue du Bon Pasteur 69001 Lyon – FRANCE

N°SIRET 484 904 354 00020 - APE 923A – Licence Entrepreneur Spectacle N° 69/1293 et 69/1294

Tel: 00 33 (0)4 78 29 30 57 Fax: 00 33 (0)4 78 39 94 92 Email: musicprodart@aol.com Site: www.musicprodart.com